

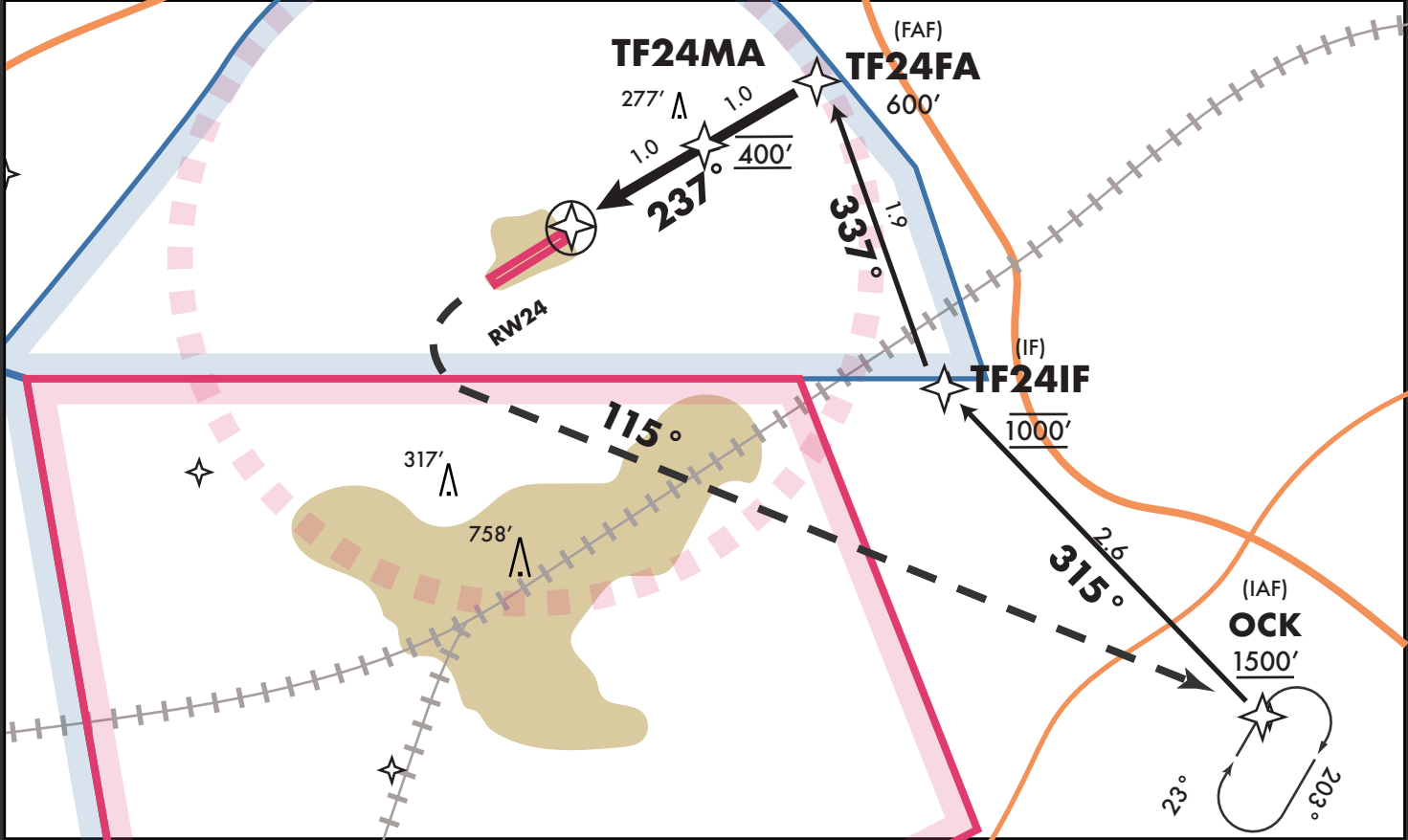
EGTF
Fairoaks

March 2025

FAIROAKS, UK
VISUAL Rwy 24

Farnborough Atis 128.405	Farnborough App 134.355, 125.250	Fairoaks Info 123.430	<div>2200'</div>
Final apch crs 237°	DA(H) 400' (320')	Apt Elev 80' Rwy 76'	
MISSED APCH: Turn LEFT (MAX 120 KT) as soon as possible to OCK climbing to 1400' on 115° radial and enter Hold South East of OCK on the 23° radial or as advised by Farnborough App			

Alt Set: hPA	Trans level: By ATC	Trans Alt: 6000'
1. Establish MAX 110kt ground speed by OCK	4. Enter VNAV for OCK, TF24IF, TF24MA	
2. Final Visual Leg and APR activated after TF24FA	5. Must be practiced in VMC within 30 days	
3. 3° slope on TF24MA by 1.0 nm at 400'		



RW24		TF24MA		TF24FA		TF24IF		OCK	
								1500'	